

# Real Estate Auction

81 Acre Land w/ Buildings

Saturday, August 19<sup>th</sup>, 2023 @ 11 AM

2800 Block, Peters Mountain Rd (Rt 225) Halifax, PA 17032



**Township:** Halifax • **Taxes:** \$7252.00 • **Tax Parcel:** 029-031-009-000-0000

**Property Description:** 81 Acre farm with great producing farmland (No House), approx 65 Acres tillable, 15 acres woodland, equipment buildings, bank barn, hay storage and public water running through the property. Great location to build your dream home or new residential development. Property will be offered in two separate parcels.

**Parcel #1** approx 45.5 acres (approx 40 acres tillable & 5 acres woodland)

**Parcel #2;** approx 36.8 acres (21 acres tillable, 12 acres woodland), 60x60 equipment building, 42x52 bank barn, 32x42 hay storage building

**Notes:** Showings By appointments

**Terms:** \$75,000 down payment is required day of auction. Buyer to pay 2% Realty transfer tax, Settlement within 60 days.

**Auctioneer:** Kore Fisher (717) 587-2539 • **Attorney:** Joseph Kerwin (717) 362-3215



1% Broker Participation offered to Realtors with a successful buyer, pre-registered 72 hours prior to auction. Terms day of auction supersede all marketing material, For additional pictures go to; [fisherauctions.net](http://fisherauctions.net) or [auctionzip.com](http://auctionzip.com) ID# 50522

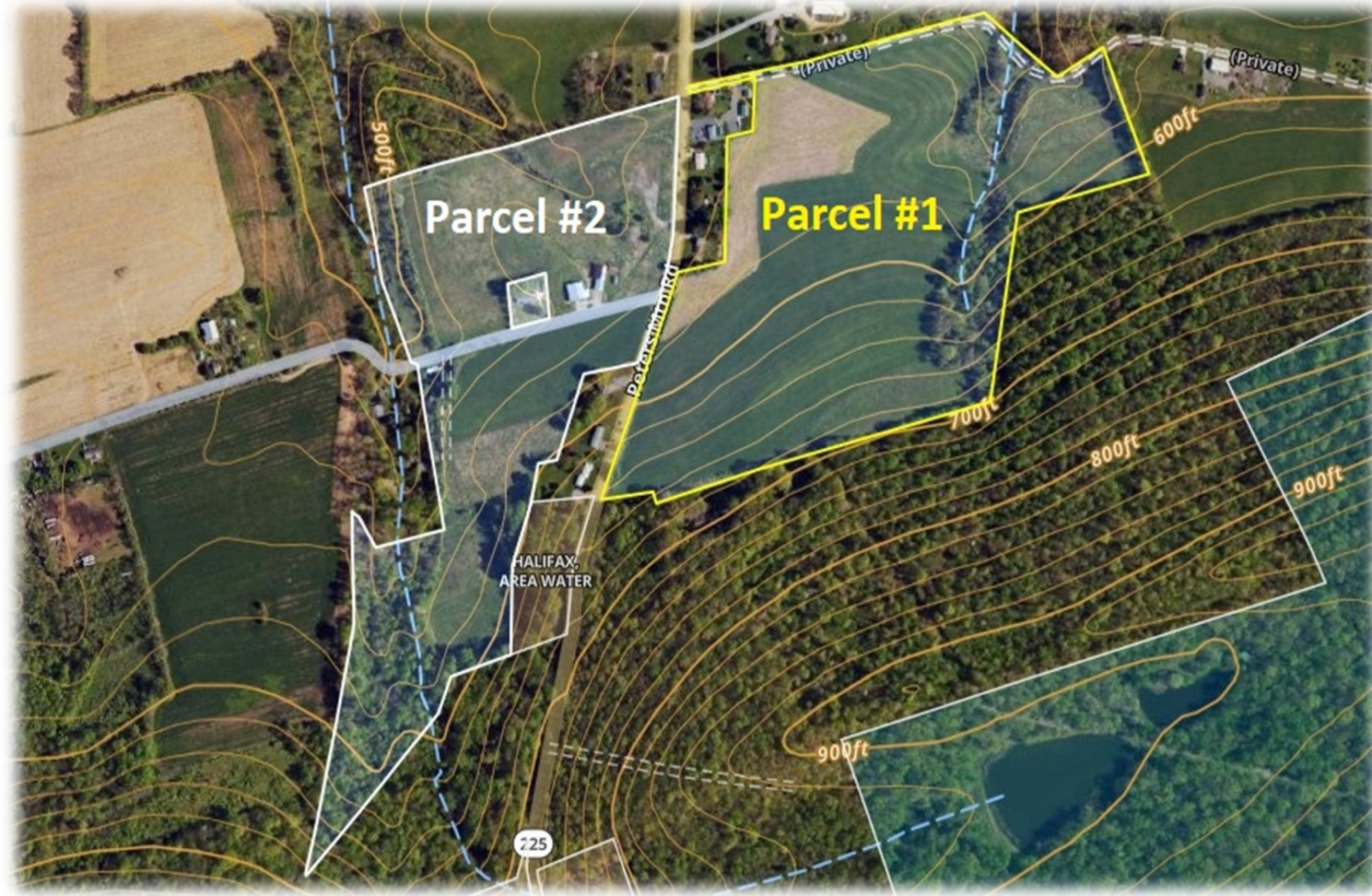


717.219.5300  
[fisherauctions.net](http://fisherauctions.net)  
Lic# AY002418

 **FISHER**  
AUCTIONS

Auction For:  
Geraldine Scheidler Est.





717.219.5300  
 fisherauctions.net  
 Lic# AY002418



**FISHER**  
 AUCTIONS

Auction For:  
 Geraldine Scheidler Est.

