

3.6 Acre Homestead

- Lancaster County, PA -



214 Brick Mill Rd. Christiana, PA 17509

Auction: Tuesday, June 3, 2025 @ 6PM

3.6 acre Homestead w/4 bedroom house, propane appliances, 1st floor bedroom, gas fireplace, radiant floor heat, 10'x30' patio/deck, 40'x50' barn (30'x40' heated shop, 3 horse stalls, full 2nd floor w/ insulated wood working shop or use as a rec room), solar system, 12'x50' barn (3 horse stalls, feed room, insulated animal pen) 12'x32' shed (2 large dog kennels, storage area), 1000 gal. propane tank, approx. 1.5 acres pasture. The property is partially wooded w/ small stream and located in a quiet neighborhood.

Settlement on or before: August 4, 2025 / Deposit: \$40,000
Auction For: Levi & Susie Miller

Open House Dates: May 10th (1-3pm) & May 17th (1-3pm) / For private showings call: 717-587-2539

Down Payment & Bridge Loan options available

Auctioneer:

Kore Fisher: 717.587.2539

Office: 717.219.8000

#AY002418

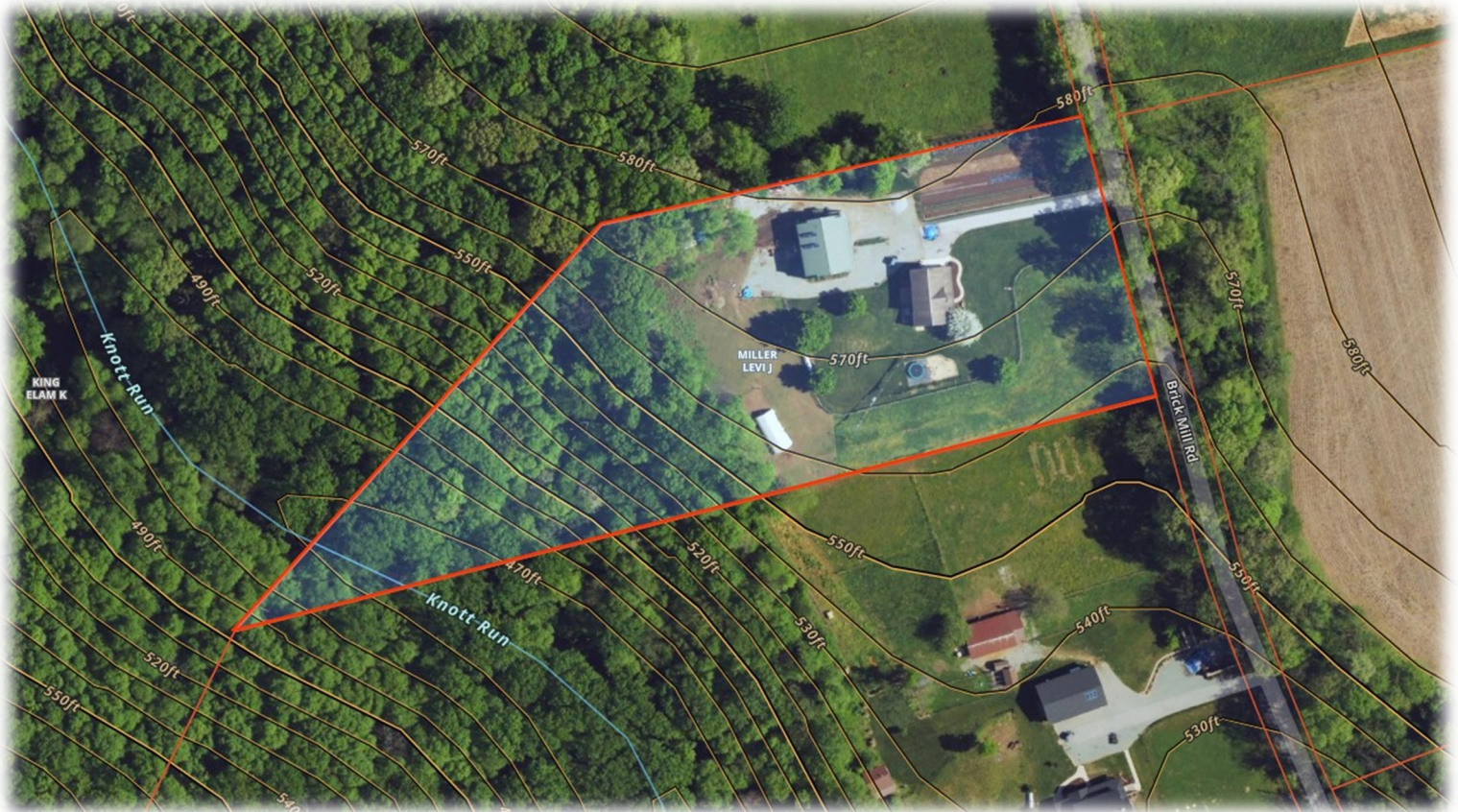


Online & Phone Bidding Available

For additional photos go to;

www.FisherAuctions.com

AuctionZip #50522



Auctioneer:
Kore Fisher: 717.587.2539
Office: 717.219.8000
#AY002418



Online & Phone Bidding Available
For additional photos go to;
www.FisherAuctions.com
AuctionZip #50522